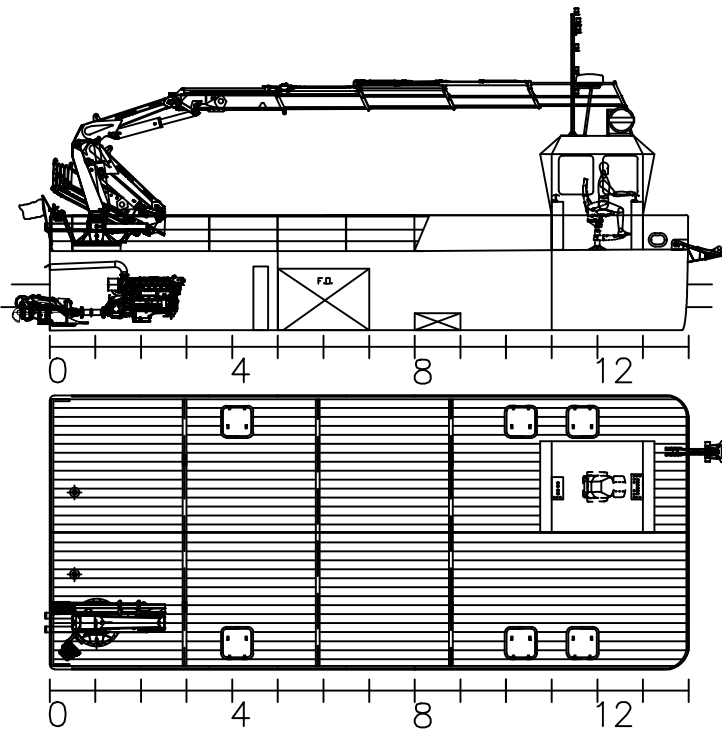


Ship design:

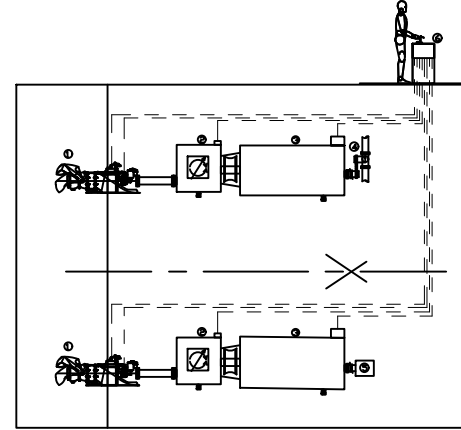
- Assymetric Catamaran hullform
- Large deck space
- Low installed power

Waterjet propulsion:

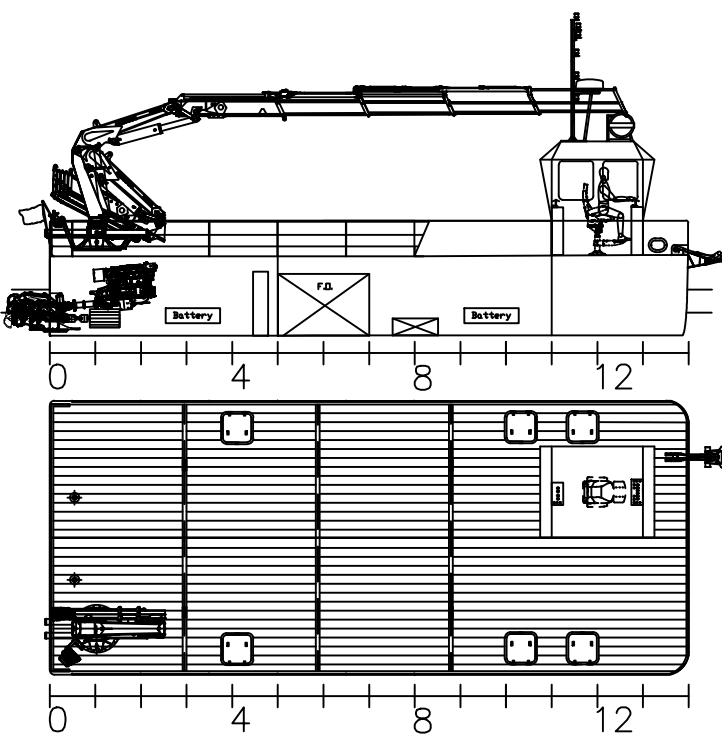
- Excellent manouverability
- Low draft
- Hybrid option:
- Low fuel consumption
- Reduced engine operating hours
- Ecological solution



Principal particulars
 Length 14.0m
 Breadth 6.0m
 Draft 1.0m
 Power 2x166KW
 Speed 15/10kn
 Crane 17mt, 1,25t@11.5m
 Capacity 18t, 1t/m²
 Deck area 90m²
 Material Aluminium

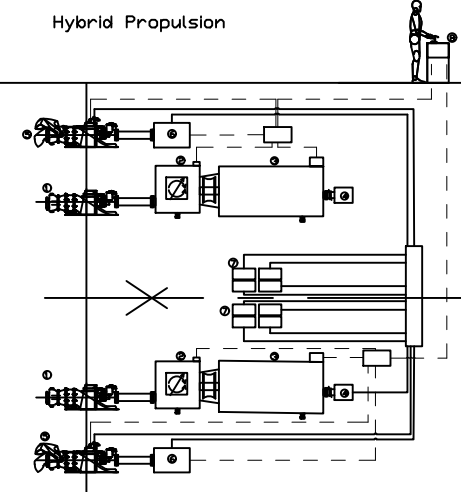


No.	Materiel	Details
1	Water Jet	Doen DJ120
2	Gearbox	ZF 280-1, RR 1,056:1
3	Main Engine	Volvo Penta D7C TA 166KW, 2300rpm, rating 1
4	Hydraulic pump	Single sauer series, frame K, 45cc load sense pump (40l/m-890rpm)
5	Alternator	80A/24V DC
6	Control system	Kobelt mecanical



Principal particulars
 Length 14.0m
 Breadth 6.0m
 Draft 1.0m
 Power 2x118KW+2x50KW
 Speed 15/10kn
 Crane 17mt - 1.25t@11.5m
 Deck area 90m²
 Capacity 18t, 1t/m²
 Material Aluminium

Hybrid Propulsion



No.	Materiel	Details
1	Water Jet	Doen DJ110 Booster
2	Gearbox	ZF 45-1
3	Main Engine	Volvo Penta D5A TA 118KW, 2300rpm, rating 2
4	Alternator	80A/24V DC
5	Water Jet	Doen DJ110
6	Electric motor	Torqueedo Deep blue 50KW 345VDC
7	Batteries	Torqueedo Deep Blue 12.8KWh/345V
8	Control system	Doen electric eDock

Note: proposal only, design can be modified as per operator request.